

# Angels Landing, 5,790'

## Zion National Park

### Zion Canyon Scenic Drive

### Springdale, UT

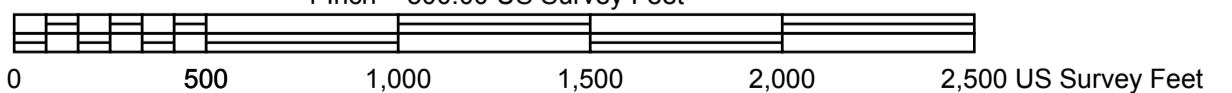
NAD27 Datum Universal Transverse Mercator Zone 12

cloudhiking.com  
all rights reserved



On 11/12/2012 the  
magnetic declination is +11.7°  
changing by -0.11° per year

Scale 1:6,000  
1 Inch = 500.00 US Survey Feet



For Emergencies - dial 911  
or (435) 772-3322

Mile	Location	Elevation
0.00	Grotto Trailhead	4300'
1.10	Refrigerator Canyon	4900'
1.95	Scouts Lookout	5350'
2.50	Angels Landing	5790'

Icon	Designation
	Trailhead
	Parking
	Waypoints
	Mileage between Waypoints
	Restrooms

From April thru October shuttle buses  
are the only vehicles allowed on  
Zion Canyon Scenic Drive