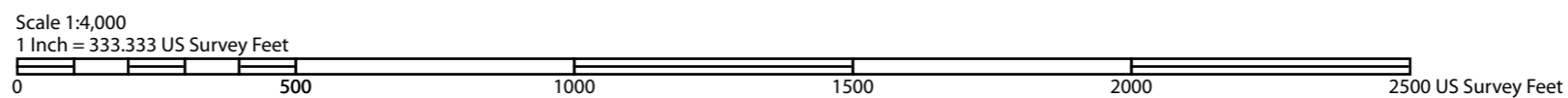


Map Completed : Dec 2011

cloudhiking.com
all rights reserved



Short Springs Natural Area Tennessee State Natural Areas

mile	location	blaze	trail	mileage
.00	Short Springs Trailhead, Start of Machine Falls Trail	White	Machine Falls Trail	1.60 miles
.10	Junction with Busby Falls/Bobo Creek Trail	Blue	Busby Falls Loop Trail	.70 miles
.45	Junction with Laurel Bluff Tr (Bobo Creek Access)	Purple	Laurel Bluff Trail	1.50 miles
.80	Junction with Machine Falls Trail	Orange	Adams Falls Trail	1.10 miles
.85	Junction with Red Connector Trail	Yellow	Wildflower Loop	.10 miles
1.00	Machine Falls Branch	Red	Connector Trail	.10 miles, one way
1.10	Adams Falls Trail junction	Side trail to Machine Falls, one way		.05 miles
1.60	Adams Falls sign			
2.20	Return to Machine Falls Trail			
2.40	Junction with Red Connector Trail (other end of trail)			
2.70	Cross Machine Falls Branch			
3.05	Return to the Trailhead			

Emergency Contact - 911